









Year 1/2

| Key Vocabulary    |   |
|-------------------|---|
| WORD              | DEFINITION  |
| Aerial view       | An aerial view is to look at something from above.                                |
| Compass           | A compass points out directions, such as North, South, East and West              |
| Human Features    | Features made by humans (farm, factory, house, shop).                             |
| Map               | A map is a picture of a place, usually drawn from above.                          |
| Key               | A key is a guide which explains what the symbols on the map mean.                 |
| Map Symbols       | Map symbols represent human and features physical features e.g. bridge or forest. |
| Physical features | Natural features on the Earth's surface (river, hill, mountain)                   |
| Sketch map        | Sketch maps are simple drawings of the landscape.                                 |
| Town              | A town is a larger settlement than a village.                                     |

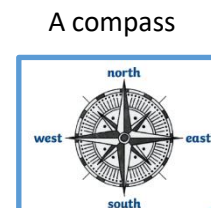
| Map Symbols   |   |   |   |
|---|---|---|---|
|  |  |  |  |
| All Saints' Church  | A65 main road   | phone box   | Ilkley Post Office  |
|  |  |  |  |

## Key Knowledge and facts

- ❖ There are 4 countries that make up the UK – England, Scotland, Wales and Northern Ireland.
- ❖ The capital of England is London.
- ❖ The capital of Wales is Cardiff
- ❖ The capital of Northern Ireland is Belfast
- ❖ The capital of Scotland is Edinburgh.
- ❖ Ilkley is a spa town in West Yorkshire.
- ❖ The River Wharfe flows through Ilkley

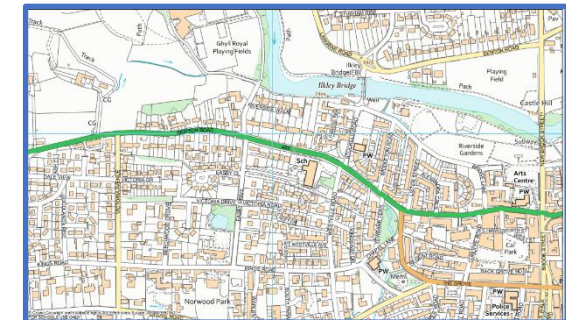


### Sketch map



## Key Maps and features

## Ilkley



## Physical and Human Features

## Human features of Ilkley



### Physical features of Ilkley

