

Future careers connected to Evolution and Inheritance: Geneticist, DNA Analyst, Biological Researcher, Conservationist

Key Vocabulary

WORD	DEFINITION
<b>Adaptation</b>	changes or special features of a living thing to help it live in a habitat
<b>Ancestor</b>	a person/living thing an organism is descended from
<b>Epiphytes</b>	plants that grow on the surface of other plants
<b>Evolved</b>	how living things gradually change over time
<b>Fossil</b>	the remains or impression of a prehistoric plant or animal embedded in rock
<b>Homo sapiens</b>	the scientific name for the human species
<b>Ichthyosaurus</b>	a large marine reptile that lived 201-194 million years ago
<b>Inherit</b>	when features are passed on from parents to offspring
<b>Natural selection</b>	survival and reproduction of the fittest
<b>Palaeontologist</b>	a scientist that studies the remains of plants and animals found as fossils

Fossils

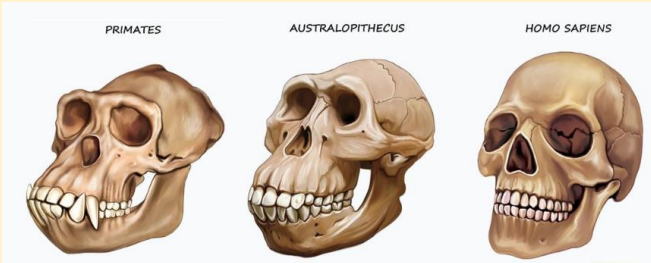
Mary Anning was a palaeontologist who found and collected many fossils along the Jurassic Coast in Dorset. She was the first person to uncover a full ichthyosaurus skeleton.



Key Knowledge

Charles Darwin, the Galapagos Islands and Human Evolution

Charles Darwin was a famous naturalist who studied finches and tortoises on the Galapagos Islands. He suggested that some species may share a common ancestor and evolve to suit their habitats. He called this process natural selection.



Adaptations

Plants and animals have numerous **adaptations** which help them to survive in their **habitats**.

- Camels have humps to store food, two rows of eyelashes and small slits for nostrils
- Epiphytes are plants which can grow on the surface of another plant
- Some plants contain toxic minerals to protect themselves from predators
- Other plants can store water, trap insects and smother other plants



Characteristics and Variation

A characteristic describes how something looks or how it behaves. **Characteristics** can be passed on from parents to their offspring, meaning that they can be **inherited**. They can include hair colour, eye colour and height. However, **environmental** factors are important too.

