

## Geography

### Key Vocabulary

WORD	DEFINITION
Antarctica	Antarctica is the southernmost continent and site of the South Pole.
Arctic	The Arctic is a polar region located at the northernmost part of Earth.
Climate	The weather in a place over time
Desert	A region with very little rainfall
Continent	A continent is a large solid area of land.
Equator	An imaginary line around the centre of the earth.
Indigenous	The original or earliest known inhabitants of an area.
North Pole	The Northern-most point of the Earth's surface.
South Pole	The southern-most point of the Earth's surface.

### Famous Polar Explorers

Sir Ernest Shackleton Robert Scott Roald Amundsen



## Polar Regions

### Key Knowledge and facts

- ❖ There are 7 continents - from largest to smallest they are: Asia, Africa, North America, South America, **Antarctica**, Europe, Australia (also known as Oceania).
- ❖ The **Arctic** is a frozen ocean surrounded by landmasses.
- ❖ The Antarctic is a frozen landmass surrounded by ocean.
- ❖ Polar bears live in the North Pole (Arctic)
- ❖ Penguins live in the South Pole (Antarctic)
- ❖ The Arctic is home to lots of wonderful wildlife, including polar bears, Arctic foxes, walrus, seals, whales and narwhals!
- ❖ The indigenous people of the Arctic are called the '**Inuits**'.
- ❖ No one actually lives on Antarctica. It's only scientists and visitors who go there!
- ❖ Antarctica is an icy desert. It is the windiest and coldest place on earth.

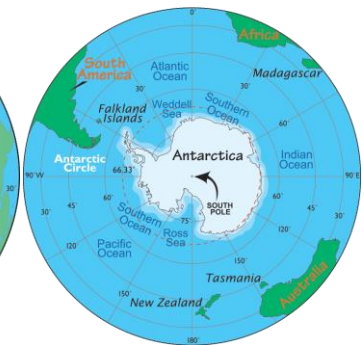
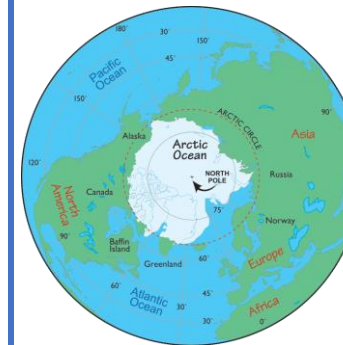
## Year 2

### Key Maps



Arctic

Antarctica



## Polar Animals

### Arctic



### Antarctica

