

What rhymes
with **man**?



sun



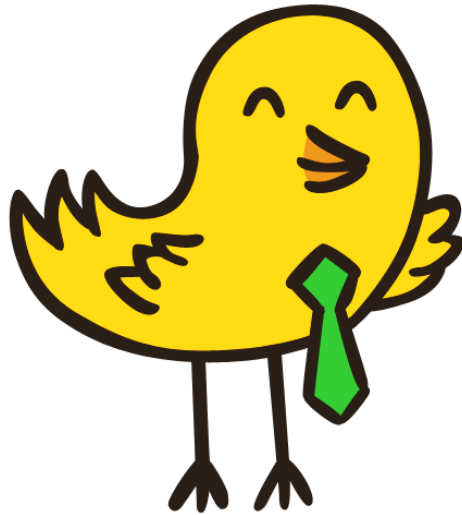
cup



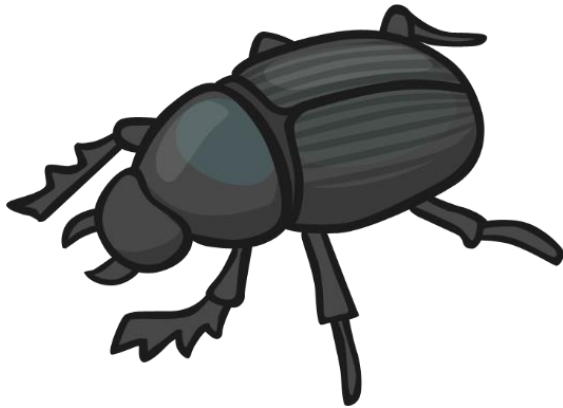
pan



Well Done!



What rhymes
with **bug**?



slug



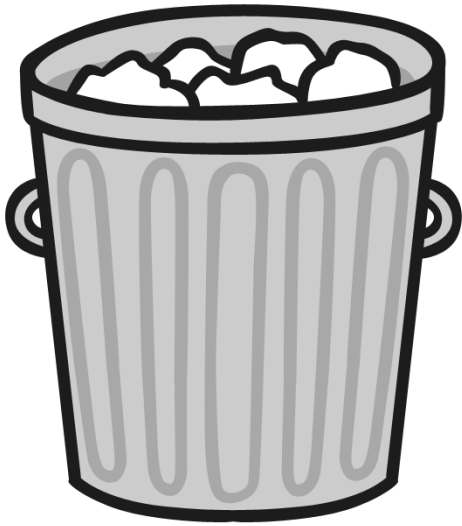
egg



can



What rhymes
with **bin**?



tin



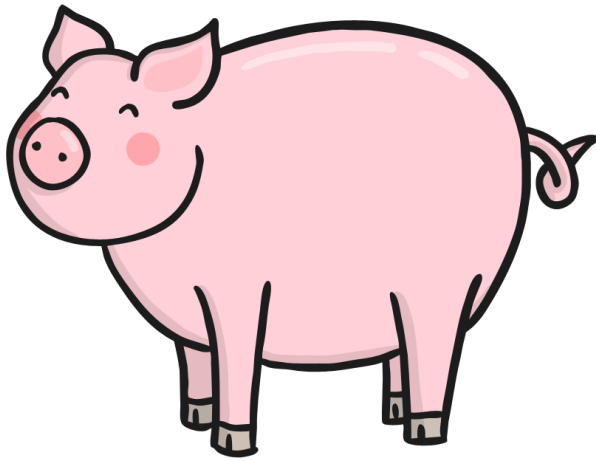
kid



cap



What rhymes with **pig**?



slug



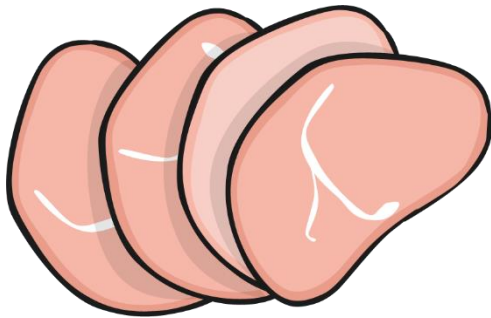
rake



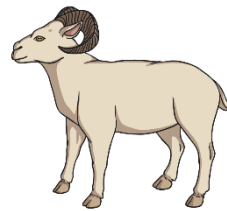
dig



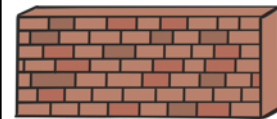
What rhymes
with **ham**?



log



ram



wall



What rhymes
with **frog**?



cat

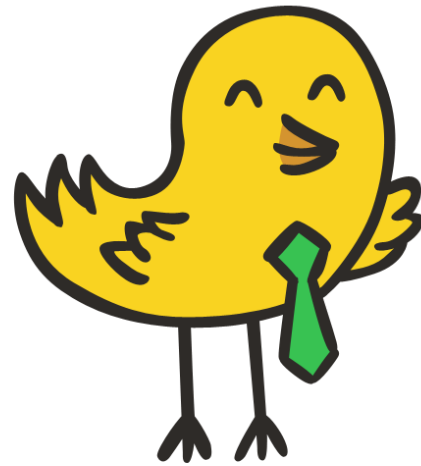


man



dog





THE END



